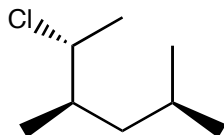


Quiz 4

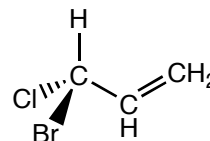
1. a. (5 pts. each) Place a star next to the chiral centers on the following molecules.

b. (5 pts. each) Circle the chiral molecules.

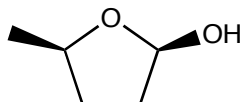
i.



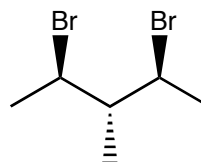
ii.



iii.

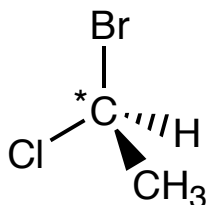


iv.

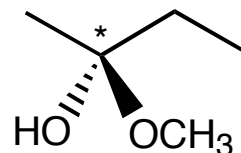


2. (8 pts. each) Determine the configuration of the following chiral centers (the starred atoms).

a.

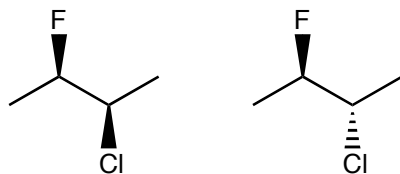


b.

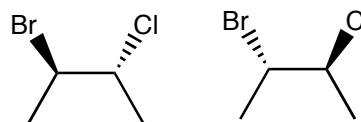


3. (5 pts. each) For each pair of molecules below, determine whether the pair are enantiomers, diastereomers, or different views of the same molecule.

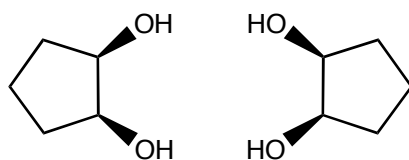
a.



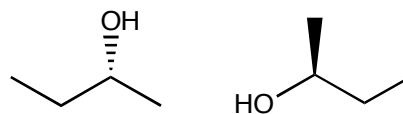
b.



c.



d.



CHEM 0201
Fall 2010

Name _____