

FALL 2024 CE Transfer Next Steps



GET CONNECTED

- Activate your student email account and [MyWestfield student portal](#).
- [Link your WSU email account to your phone](#) and start checking your WSU email regularly.
- Sign up for the [Emergency Notification System](#) through MyWestfield.
- [Complete your WSU360 profile](#) and explore your success network.
- Download the apps below to stay connected with WSU on the go:
[Westfield app](#)
[PLATO app](#)
[GET app](#)



For login/ activation assistance please [click here](#) for instructions or contact supportdesk@westfield.ma.edu

FINANCIAL AID & BILLING

- Complete [Entrance Counseling & Loan Agreement](#) for a Subsidized/ Unsubsidized (MPN) Master Promissory Note (ONLY for Federal Student Loan Borrowers).

The federal student loan will not credit the semester bill until both items are complete.

- Look over and pay your student bill. **BILLS ARE DUE 2 WEEKS BEFORE THE START OF CLASSES.**

Due
2 Weeks
Before
Classes
Start

This will be available online (not mailed) 2 weeks prior to the start of the term. Please contact Jody Gogol or Katie Case-Woodruff if you have any questions or concerns about your bill: jgogol@westfield.ma.edu & kcasewoodruff@westfield.ma.edu. Unpaid bills will result in holds on your account.

- Make sure your financial aid is all set (if applicable).

All financial aid package, scholarship and grants, or financial eligibility questions can be directed to financialaid@westfield.ma.edu.



CAMPUS LIFE & SERVICES

- Purchase your [parking permit](#).



Opens
July 15

If you will have a vehicle on campus, make sure you purchase your parking permit for the semester. All parking decals are virtual and will be linked to your vehicle's license plate number.

- Living on campus? Complete your Housing Agreement, create your roommate profile, and get ready to meet your roommate all online!



New student move-in is the weekend before classes begin. For housing questions, please contact Residential Life at (413) 572-5402 or housing@westfield.ma.edu.

- Complete the [Health Insurance Waiver or Enrollment Form](#) (students in 9 or more credits only)



Due
June 1
or ASAP

You can review our insurance brochure, enroll in our plan or waive our health insurance. You MUST either enroll in our plan or waive it.

- Upload your photo for your [Student ID card](#).



Opens
May 8

Online-only students are not required to get a student ID. If you are a resident living on campus, you will receive the card when you move in. If you are a commuter, you will pick up your ID card when classes begin. ID cards will not be mailed.

- Complete the Disabilities Notification Form (if applicable)



Complete the [Disabilities Notification Form](#) to find out about support services and reasonable accommodations for students with disabilities. For more information, email [Disability Services](mailto:ds@westfield.ma.edu) at ds@westfield.ma.edu.

- If you are a veteran or are military-connected, contact the [Veteran and Military Services office](#).



- If you were previously part of a TRIO Student Support Services Program at another institution, [apply to join TRIO](#) at Westfield State.

- Find your flock! Meet former WSU transfer students and get connected your first term with the [Transfer Peer Mentor program](#)!



Transfer Student
Pride!



ACADEMICS & CLASSES

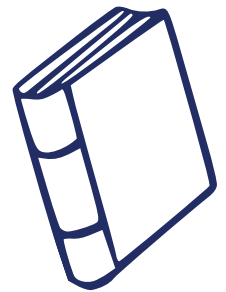
- Check your degree audit to make sure that everything transferred correctly, including AP credits and CLEP scores.
AP & CLEP scores can be sent directly to the [Registrar's Office](#).
- Review your course schedule.
Reach out to the Transfer Advisor, Brittany Garand, with any questions or concerns at bgarand@westfield.ma.edu.
- Submit your final official transcripts to the [Continuing Education Admissions Office](#) as soon as your semester grades are posted.

If you do not submit your final transcripts, a registration hold may be placed on your account to prevent you from registering for classes next semester!



- Find and purchase your textbooks [here](#).

Please note: we recommend that you wait until late August, when schedules are finalized, before purchasing any class materials.



Note: Students are loaded into their online courses the weekend before classes start. If you add an online class after classes have begun, it may take up to 24 hours to become active in your PLATO.

REQUIRED FORMS

- Complete the required Title IX and Alcohol EDU Trainings.
They will be sent to your WSU email address before the semester starts and are federally required. These trainings must be completed each academic year. Failure to complete the trainings will result in a \$100 fine and a hold on your account.



- Update your preferred/ chosen name (if applicable).

Please give the system time to update across different campus systems.



WELCOME TO WESTFIELD STATE UNIVERSITY!